

ICARUS Quickstart Guide (Version 1.05)

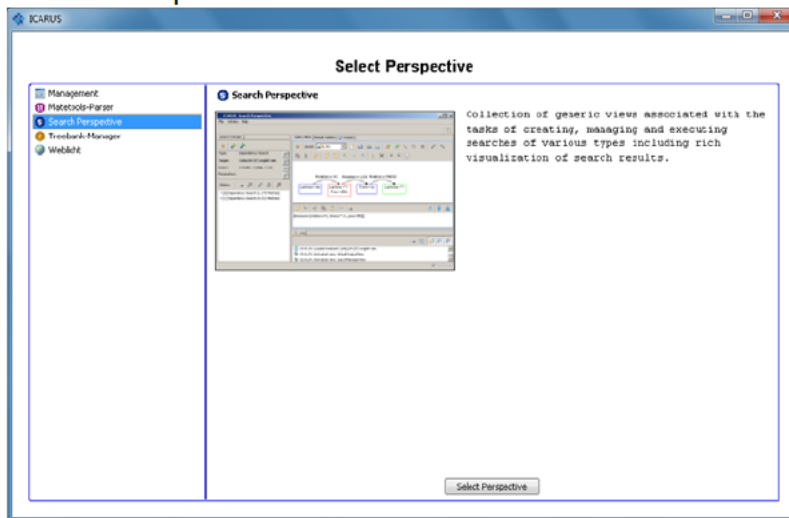
Download ICARUS www.ims.uni-stuttgart.de/data/icarus.html

1) Start ICARUS via commandline (Java 1.7 required):

`java -Xms1g -Xmx2g -jar icarus.jar`

adjust the heap space parameters (Xms , Xmx) to your needs

2) Select Perspective



M Matetools-Parser

Parse a sentence using the integrated mate-tools pipeline ¹

S Search Perspective

See section 4) for more information

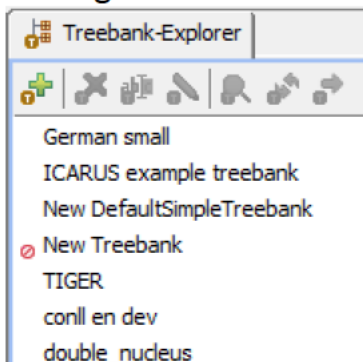
T Treebank-Manager

Select existing Treebank (CoNLL or TCF)

W Weblight

Parse a sentence using CLARIN-D webservices ²

3) Manage Treebanks using the **T** Treebank-Manager Perspective

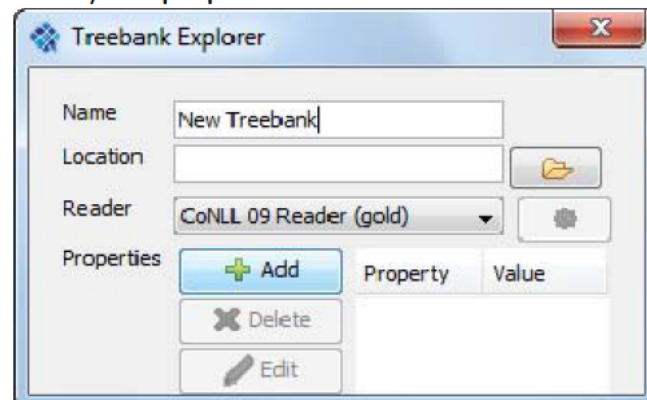


Note the "New Treebank" is marked with an this indicates that there was no location set.

3.1) Create new Treebank

3.2) Use modification buttons to delete, rename or edit selected treebank.

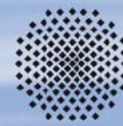
3.3) Specify Treebank name, location, reader (using the Dropdown menu) and properties



3.4) Use to load the treebank. Afterwards it can be inspected pressing . The unload button will unload the treebank.

¹ Models need to be downloaded separately (<http://code.google.com/p/mate-tools/>)

² The user needs to specify URLs for CLARIN webservices



ICARUS Quickstart Guide (Version 1.05)

4) Build Query using the Search Perspective

4.1) create a new search using the search-toolbar

Type:	Dependency-Search		Search type, here Dependency-Search
Data-Set:	ICARUS example treebank		Data-Set = Treebank used for
Query:	2 nodes, 1 edge, 1 root		4.2) Query Editor
Parameters:			4.3) Parameters

Use Buttons to configure search

4.2) Query Editor:

- add nodes using the graph-toolbar
- insert edges using the graph-toolbar or by dragging the center of a node onto another
- paste nodes previously copied from another graph
- open edit dialog for a node or edge using the graph-toolbar or by double-clicking
- convert between textual and graph representation using the synchronize buttons
- edit textual query representation in the field below

4.3) Parameters:

- Search-Mode: Non-Exhaustive (stop after first hit), Exhaustive (add each sentence to the result at most one) and Exhaustive search with Grouping
- Direction: Left-To-Right or Right-To-Left
- Case-Sensitiv: On/Off
- Result Limit: limit the search result

4.4) Execute Search using the search-toolbar

4.5) View Result by double-clicking or using the inspect-button

5) Result View

- Aggregated result visualization depending on the number of grouping operators (dimensions) for up to three groups (3D)
- Result highlighting for instances of query constraints
- Fully customizable graph visualization
- Easy navigation through results for up to three groups (3D)